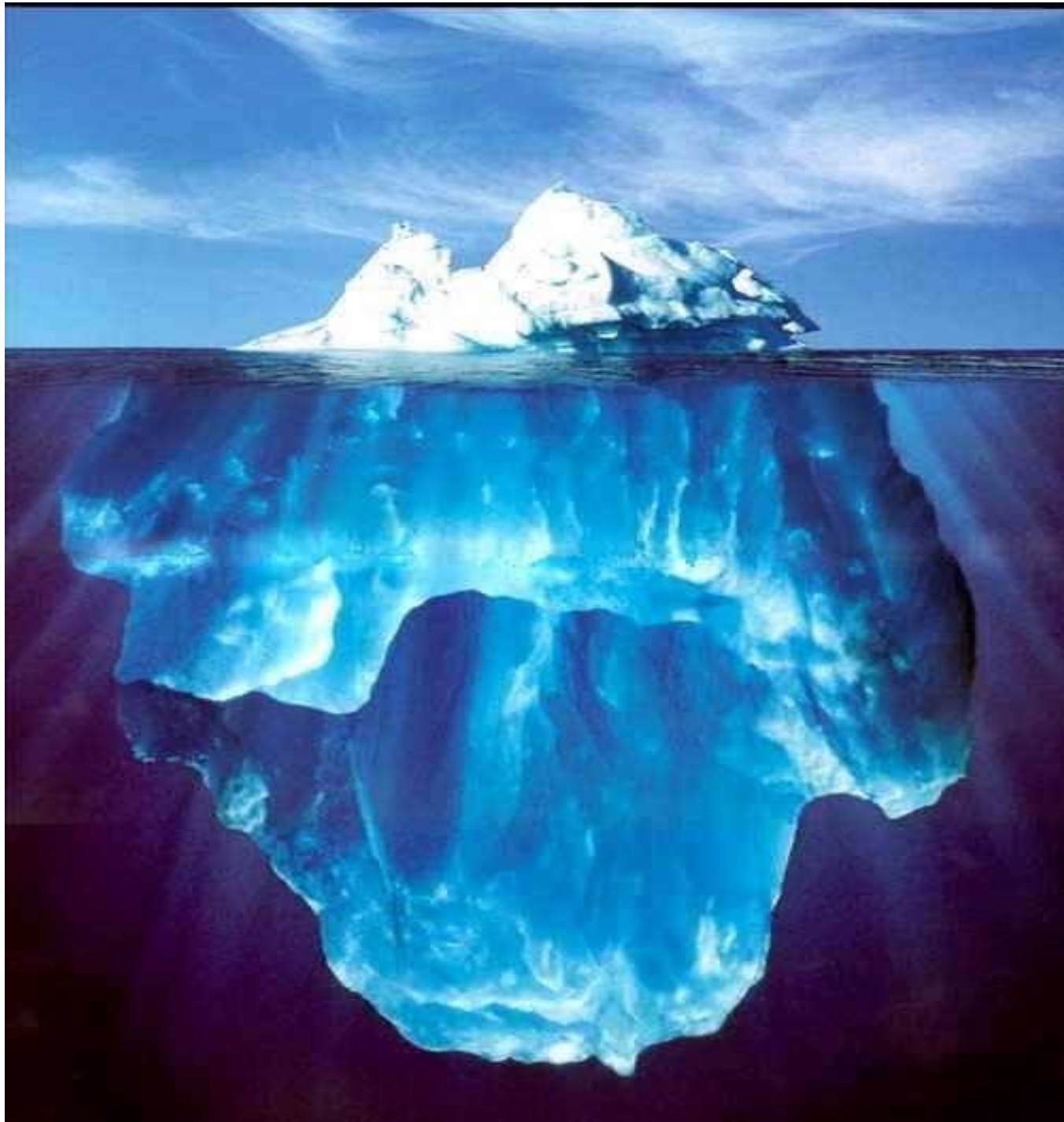


***How Race Works***  
and What it Means  
for the Church



# EPHESIANS 6:12 (KJV)

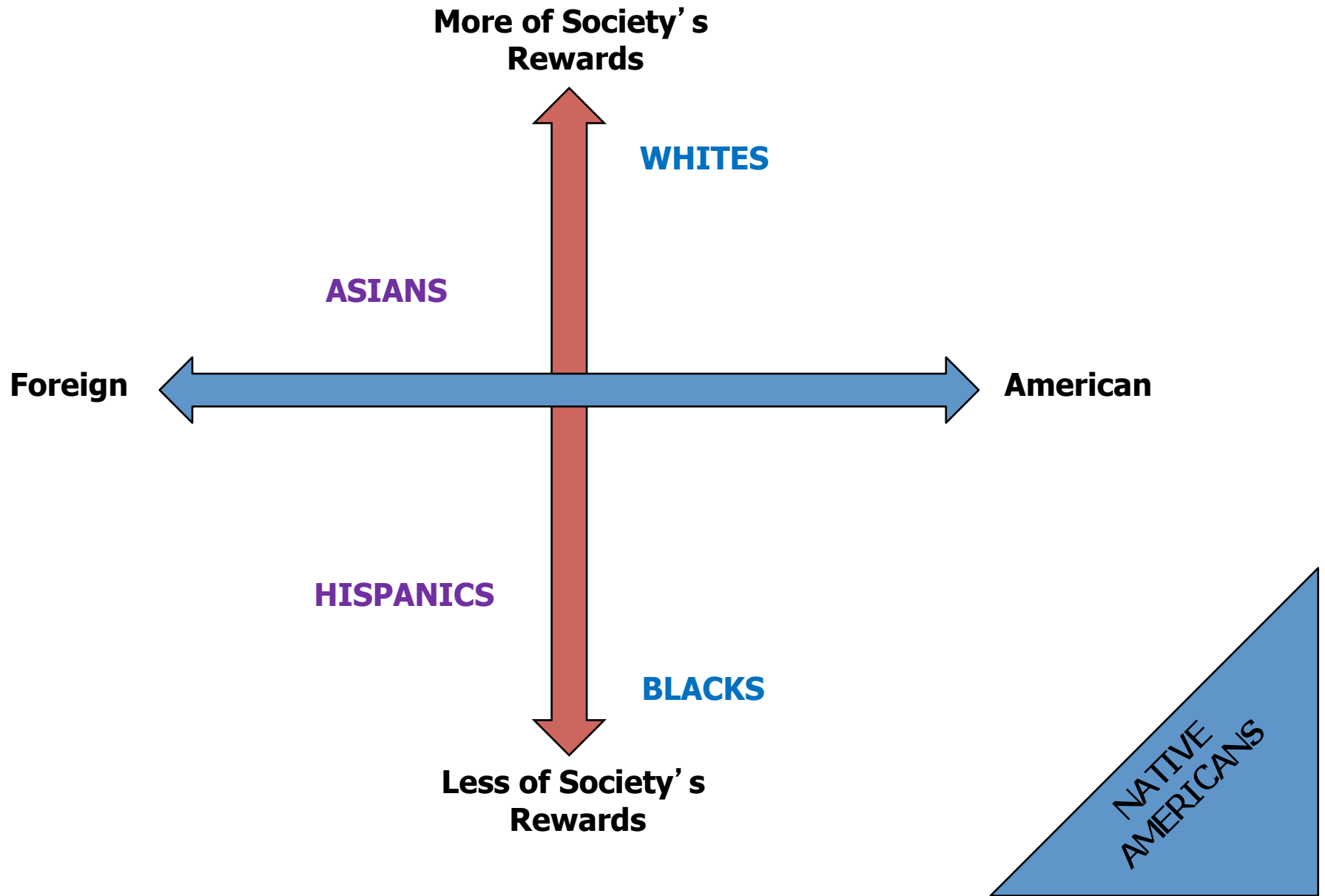
- ✕ For we wrestle not against flesh and blood, but against principalities, against powers, against the rulers of the darkness of this world, against spiritual wickedness in high places.



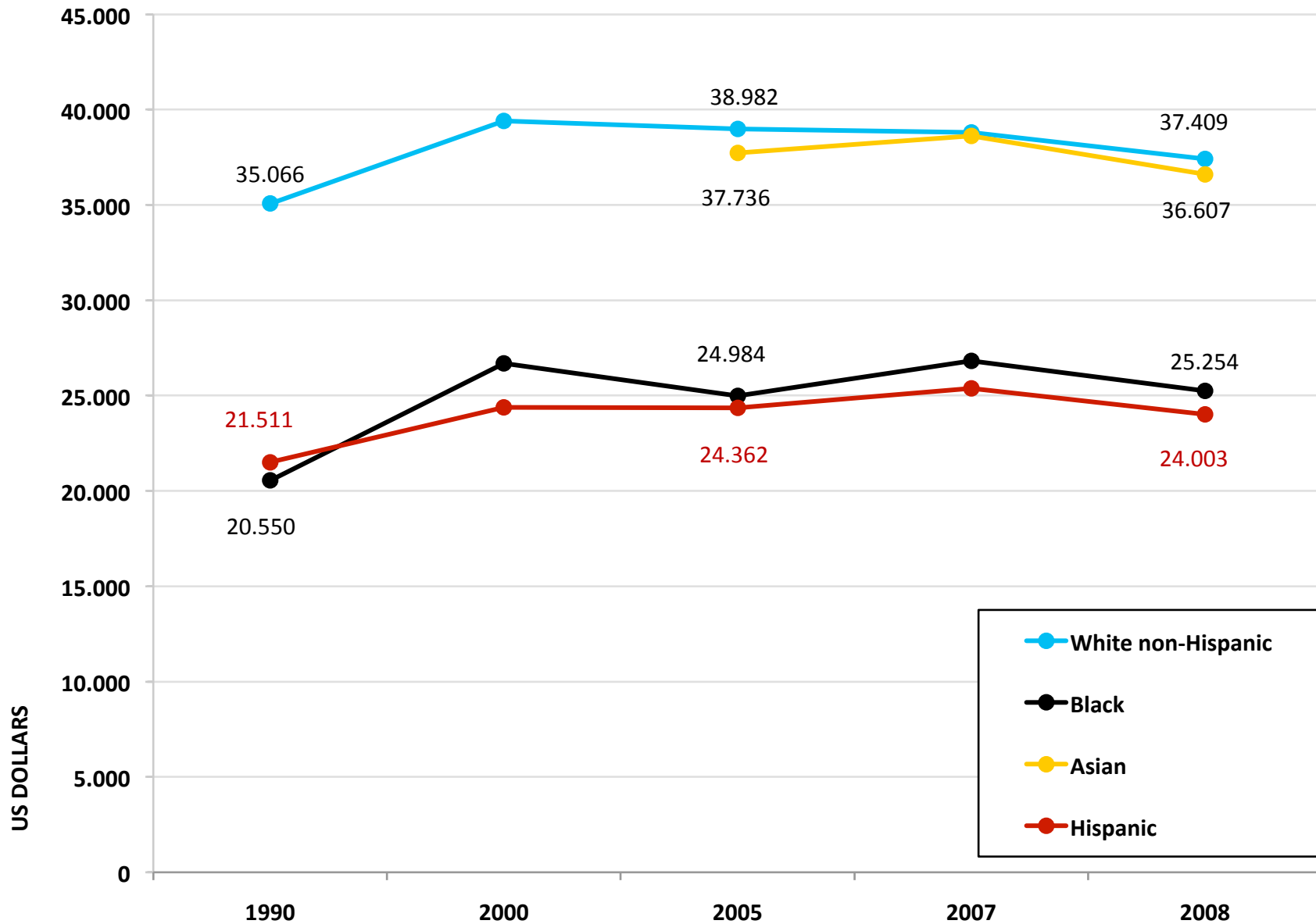
# Racialized Society

- Race matters profoundly for differences in life EXPERIENCES, life OPPORTUNITIES, and social RELATIONSHIPS.
- Rewards allocated UNEQUALLY by racial group.

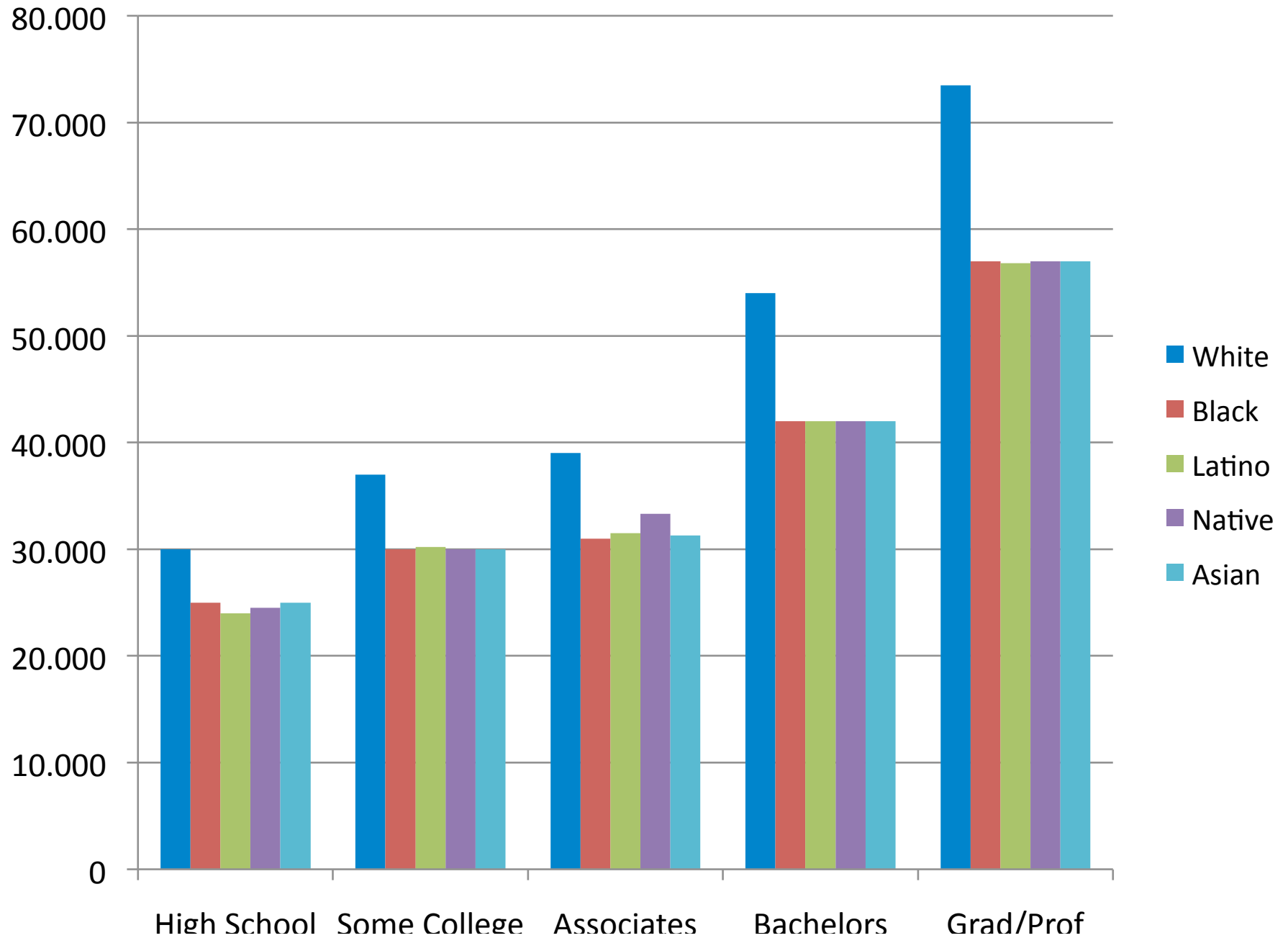
# RACE IN THE U.S.



## Median Income of Males With Income in 2008 Dollars by Sex, Race and Hispanic Origin (1990 to 2008)



## • Differential Returns on Education





# Forbes Richest 400 Americans, 2010

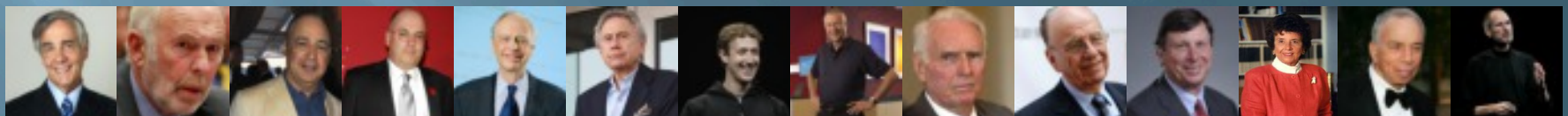
387 are white  
9 are Asian  
3 are Hispanic  
1 is African American  
0 are Native American



Bill Gates Warren Buffett Larry Ellison Christy Walton Charles Koch David Koch Jim Walton Alice Walton Robson Walton Michael Bloomberg Sergey Brin Larry Page Sheldon Adelson George Soros



Michael Dell Steve Balmer Paul Allen Jeff Bezos Ann Chambers John Paulson Donald Bren Abigail Johnson Phil Knight Carl Icahn Ron Perelman Rich Kinder John Mars Jacqueline Mars



George Kaiser James Simons Len Blavatnik Steve Cohen Edward Johnson Philip Anschutz Mark Zuckerberg James Goodnight Jack Taylor Rupert Murdoch Jim Kennedy Blair Okeden Samuel Newhouse Steve Jobs



# US is racialized in at least the following areas

9

- |   |                              |                             |
|---|------------------------------|-----------------------------|
| (1) health                              | (2) death                    | (3) employment              |
| (4) marriage                            | (5) occupation               | (6) life expectancy         |
| (7) crime                               | (8) persnl & social identity | (9) advertising             |
| (10) names                              | (11) education               | (12) neighborhoods          |
| (13) auto loan rates                    | (14) SES & spatial mobility  | (15) consumerism            |
| (16) respect                            | (17) expectations            | (18) music                  |
| (19) religion                           | (20) cost of products        | (21) mortgage rates         |
| (22) history                            | (23) TV watching             | (24) wealth                 |
| (25) property values                    | (26) politics                | (27) entrepreneurship       |
| (28) access to hi-qual affdble products | (29) self-esteem             | (30) product mark-up prices |
| (31) env polltion, haz waste            | (32) social networks         | (33) school lunch tables    |
| (34) child poverty                      | (35) standardized exams      | (36) language               |
| (37) crim. justice                      | (38) generational mobility   | (39) respect                |

# Four Steps in Modern Era

- ① De-colorate
- ② Segregate
- ③ Incarcerate
- ④ Alienate

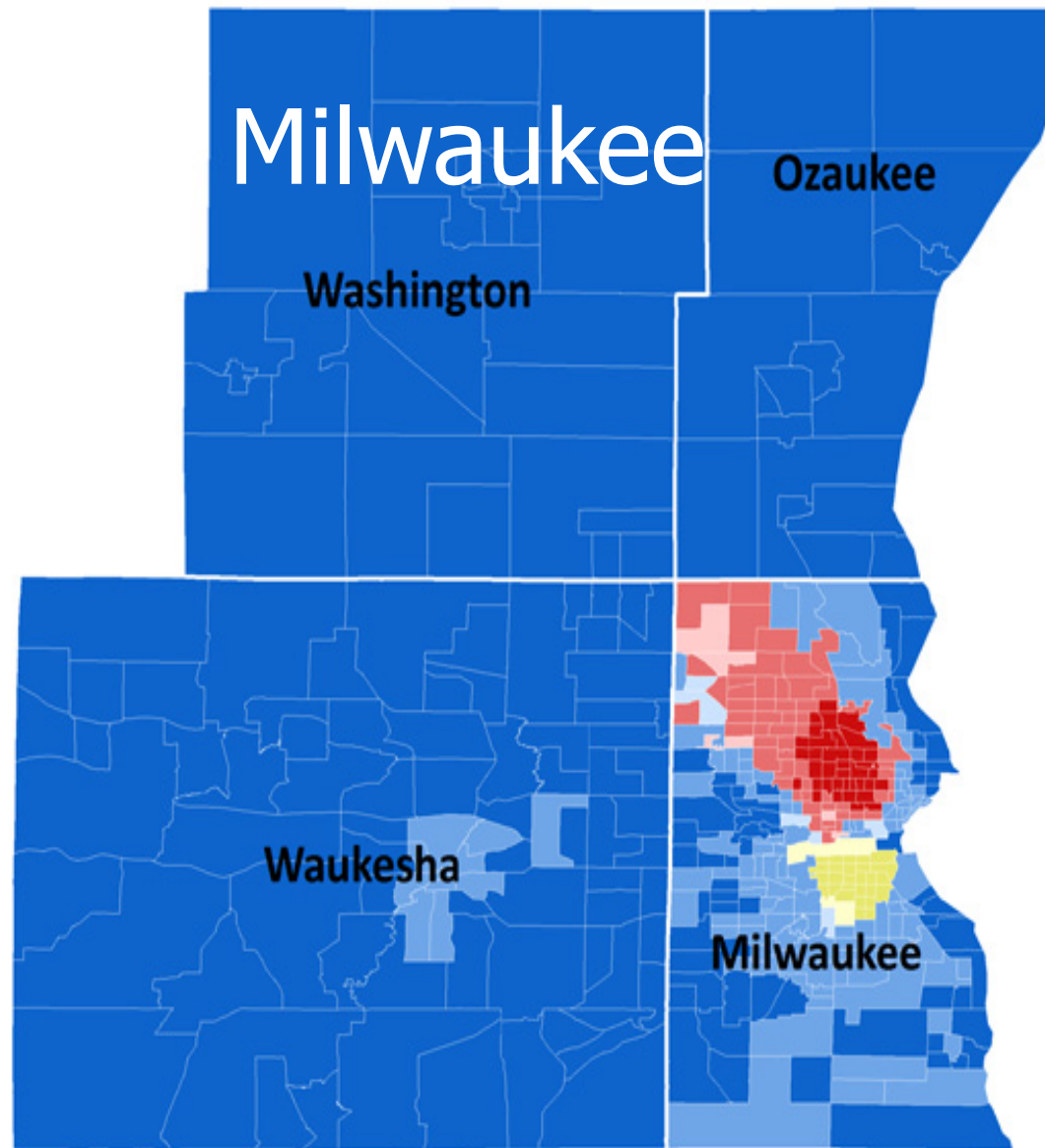
# De-colorate

- Color Blind Ideology
- Outgrowth of 1960s
- Firm hold since 1980

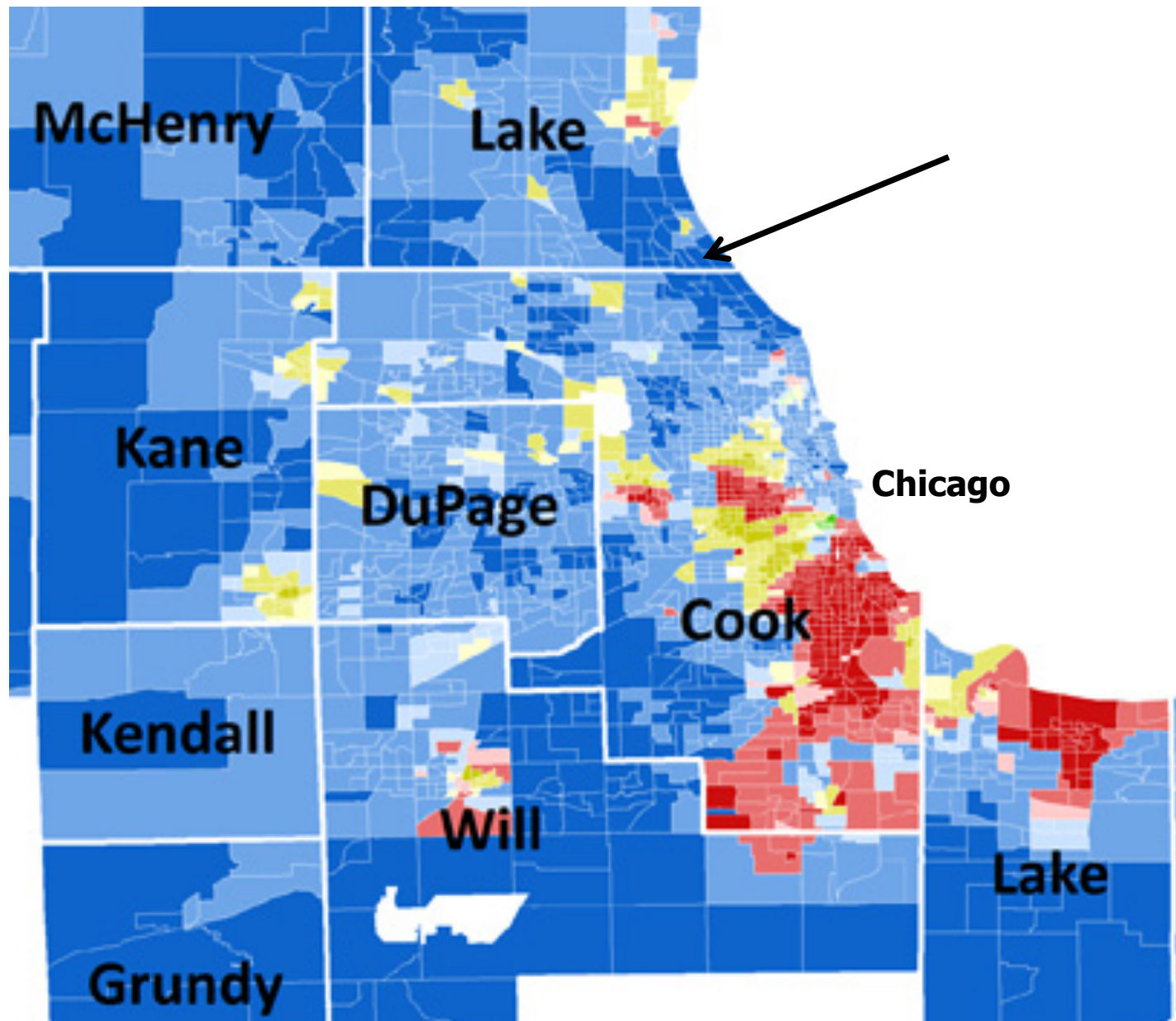


# Segregate



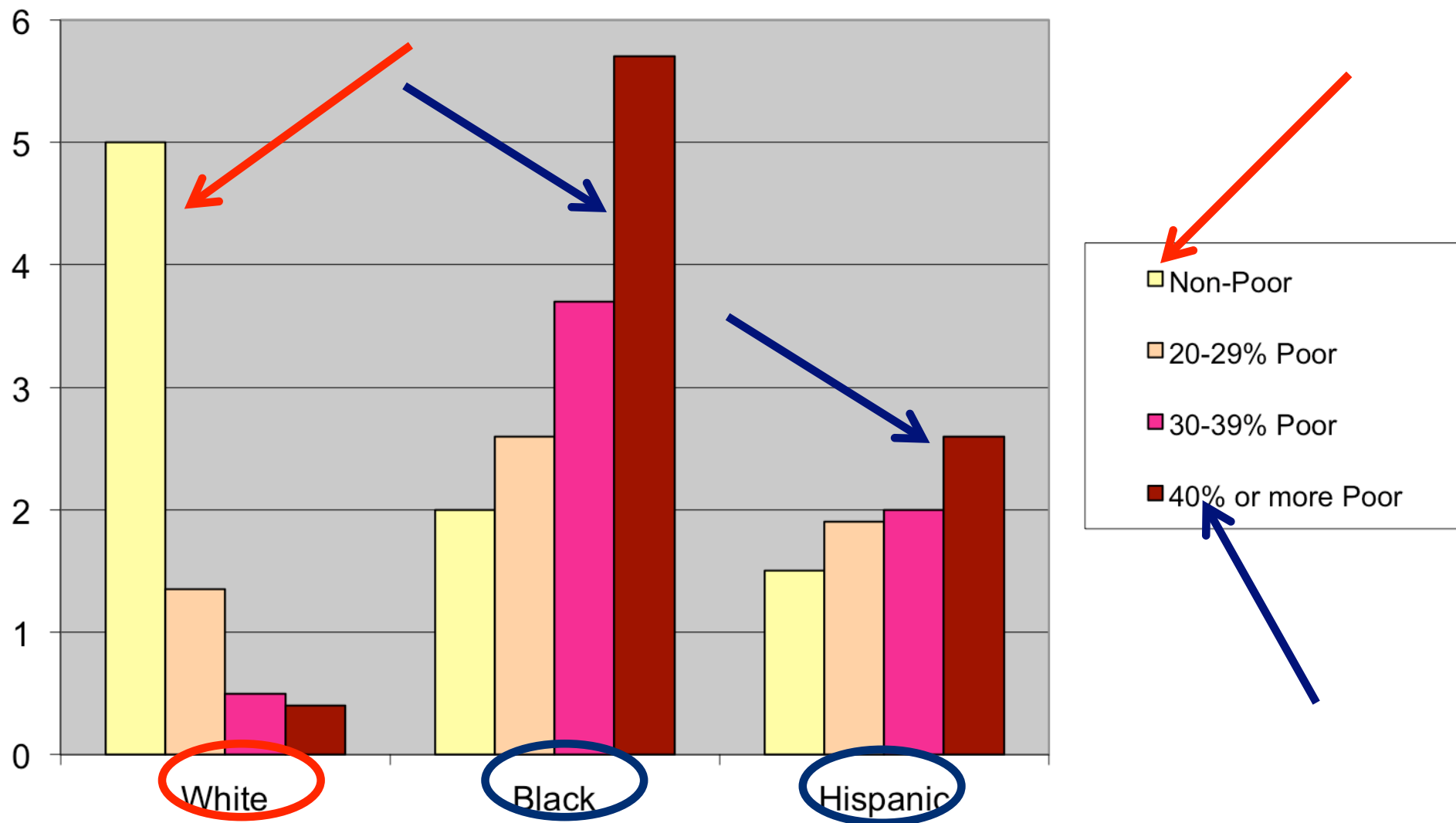


American Indian	Asian	Black	Hispanic	White
50.0% or less	50.0% or less	50.0% or less	50.0% or less	50.0% or less
50.1 to 85.0%	50.1 to 85.0%	50.1 to 85.0%	50.1 to 85.0%	50.1 to 85.0%
85.1% or more	85.1% or more	85.1% or more	85.1% or more	85.1% or more



American Indian	Asian	Black	Hispanic	White
50.0% or less	50.0% or less	50.0% or less	50.0% or less	50.0% or less
50.1 to 85.0%	50.1 to 85.0%	50.1 to 85.0%	50.1 to 85.0%	50.1 to 85.0%
85.1% or more	85.1% or more	85.1% or more	85.1% or more	85.1% or more





**Distribution of Urban Poor  
by Neighborhood Poverty Rate**

**KEY:**

- Declined more than 10 percent
- Declined 0.1 to 10 percent
- No change
- Increased 0.1 to 10 percent
- Increased more than 10 percent
- Mostly non-residential

Map of Minneapolis, Minnesota, showing population change by census tract from 1990 to 2000. The map includes major roads (I-35W, I-94, etc.), city streets, and water bodies (Mississippi River, Lake Calhoun, Lake Harriet). Three black ovals highlight specific areas of interest.

# A Real World Example: Milwaukee, 1971-1993



**For Whites and Blacks, if in 1971 home worth \$40,000**

In **1993**, that same house for **Whites** **\$250,000**

worth:  
In **1993**, that same house for **Blacks** worth: **\$32,000**

**Source:** Sunwoog Kim. 2003. "Long-Term Appreciation of Owner-Occupied Single Family House Prices in Milwaukee Neighborhoods" *Urban Geography* 24(3): 212-231.

# Emerson's Neighborhood

**80% African American**  
**16% Latino**  
**4% Other**

*Source: 2010 U.S. Census*

<b>Built/Purchased in 2006</b>	<b>\$273,000</b>
--------------------------------	------------------

<b>Sales Agreement Sept 2012</b>	<b>\$225,000</b>
----------------------------------	------------------

<b>Appraised Sept 2012</b>	<b>\$160,000</b>
----------------------------	------------------

<b>Net Gain:</b>	<b>\$-113,000</b>
------------------	-------------------

# Wealth Differences 2002

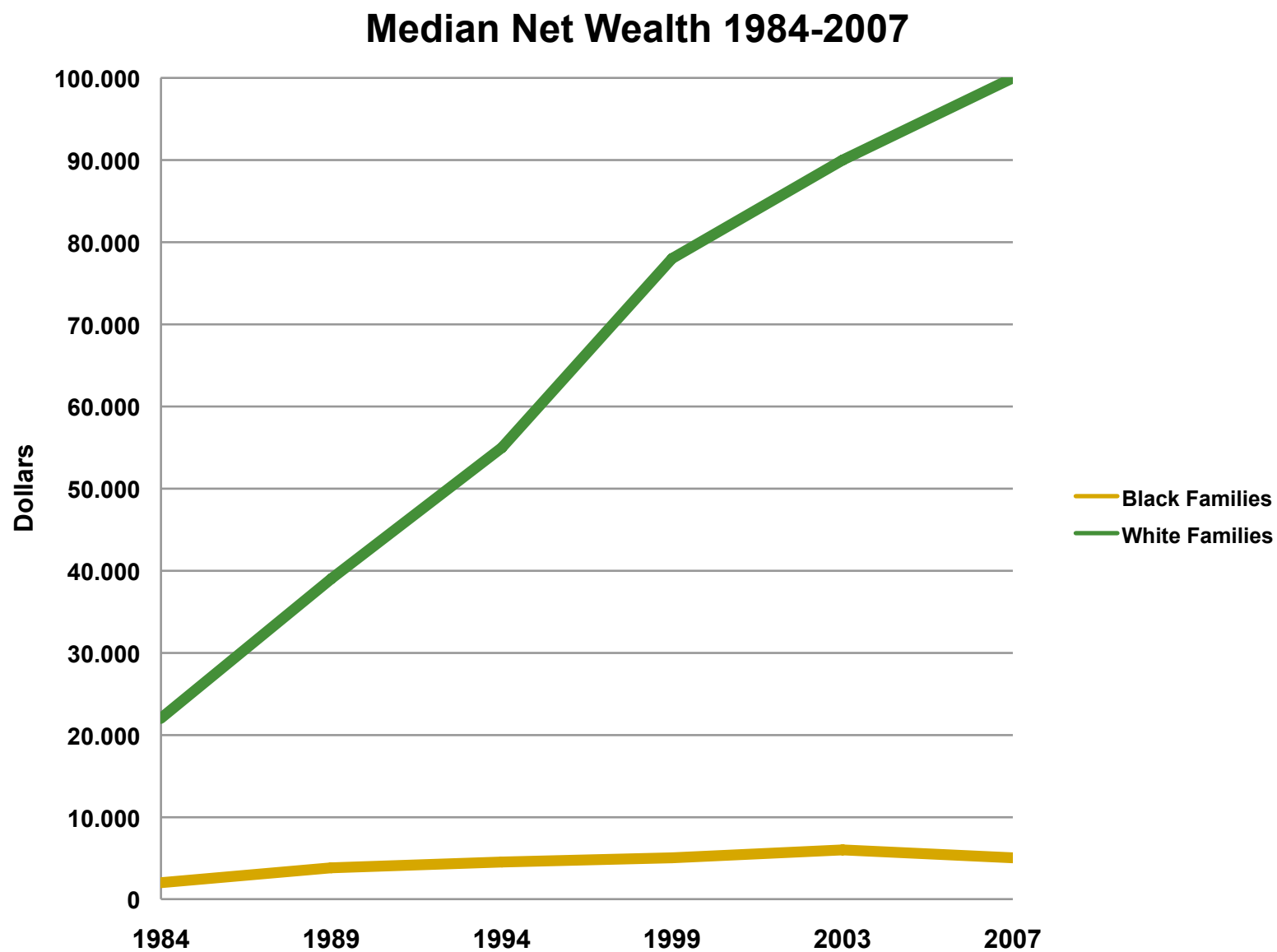
- Black Median Net Worth 6,000
- Hispanic Median Net Worth 8,000
- White Median Net Worth 90,000
  
- White/Hispanic Ratio **11.25** (10.0 1988)
- White/Black Ratio **15.00** (11.8 1988)



# Wealth Differences Over Time

- Followed same 2000 black and white families from 1984 to 2007, examining changes in the racial wealth gap.
- Found a 4 fold-increase in the gap over this time.





Source: Thomas Shapiro et al. May 2010. *The Racial Wealth Gap Increases Fourfold*. Institute on Assets and Social Policy, Research and Policy Brief. Brandeis University. 22



As of 2012  
Whites have:

50% more wealth than Asians

18 times more wealth than Hispanics

20 times more wealth than African Americans

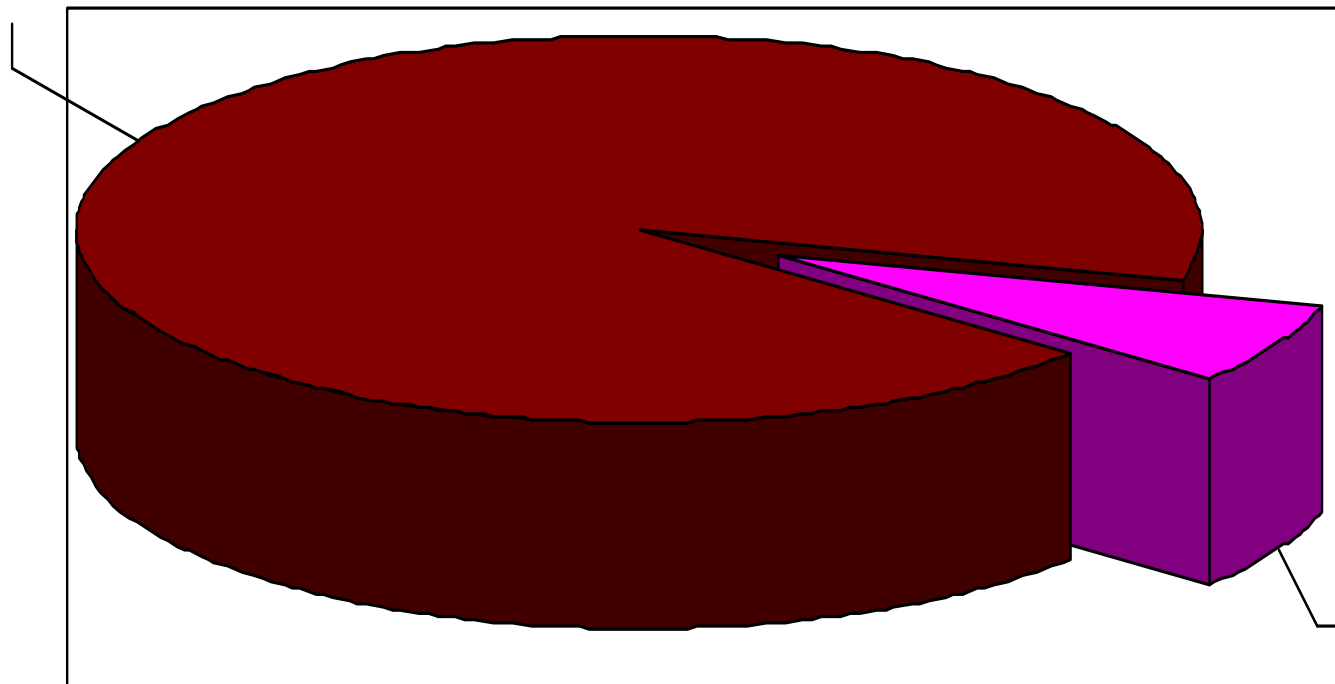
Based on U.S Census Bureau Figures

## Racial Comp of U.S. Congregations, 1998

24

**Homogeneous**

**93%**



**Racially  
Mixed**

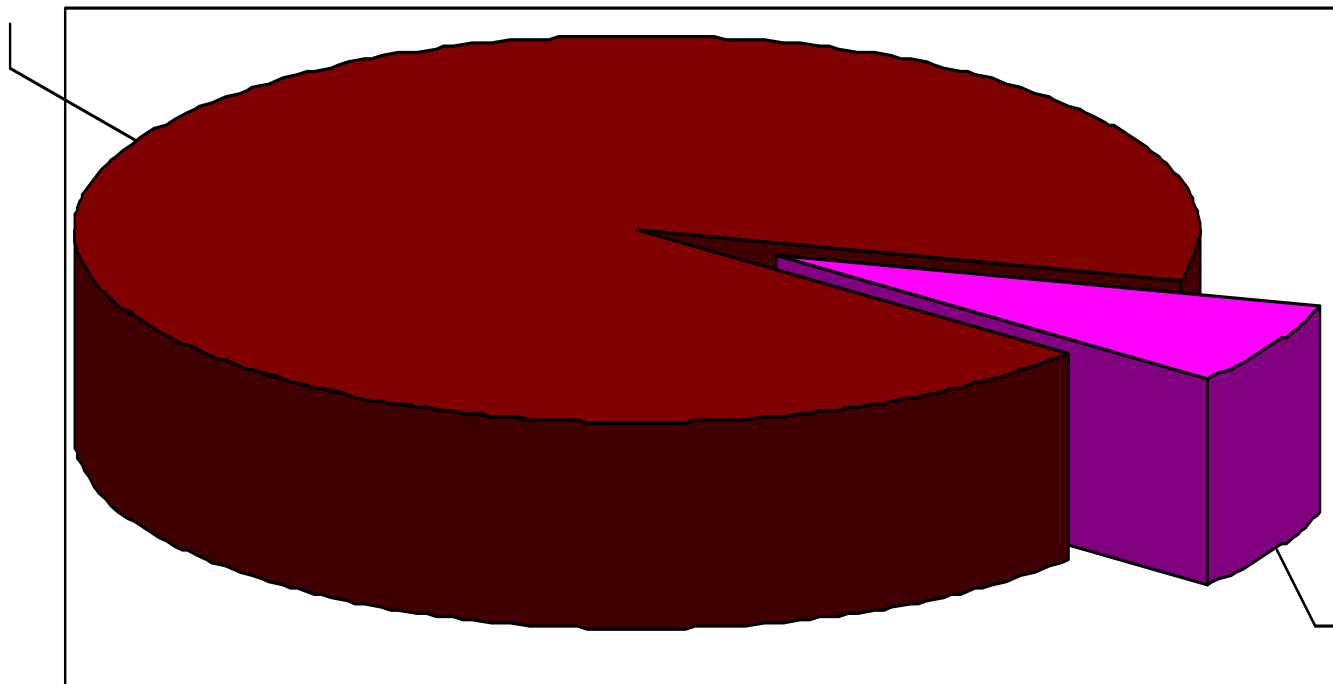
**7%**

# Racial Comp of U.S. Congregations, 2007

25

**Homogeneous**

**93%**

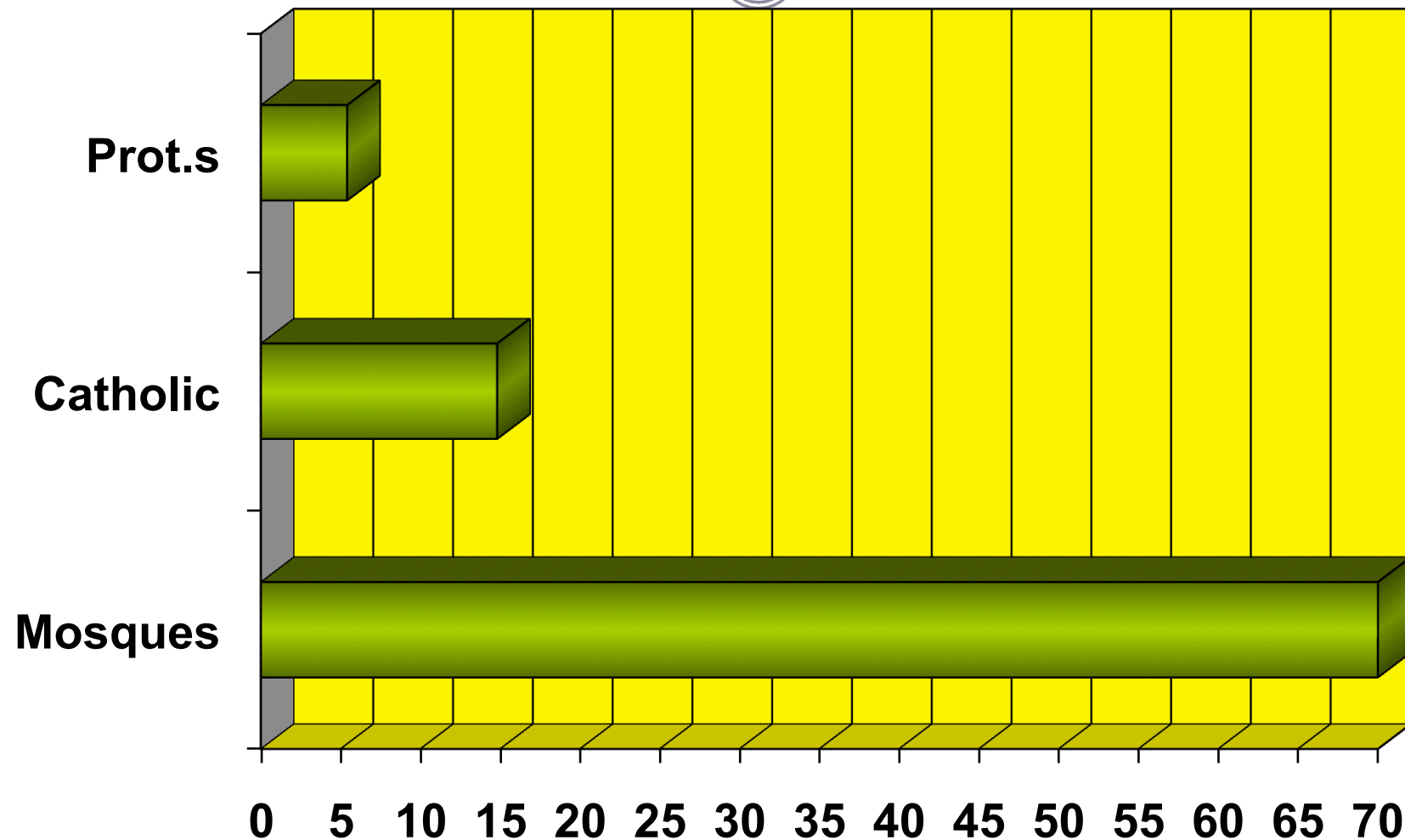


**Racially  
Mixed**

**7%**

# Racially Mixed Churches & Mosques

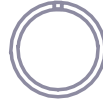
26





# How Segregated are U.S. Congregations?

---



Congregations are

**10 times less diverse**

than the neighborhoods they sit in.

And they are

**20 times less diverse**

than public schools.

# Incarcerate



The book cover features a dark, moody photograph of two hands, one on the left and one on the right, gripping vertical metal bars. The hands are illuminated from the side, highlighting their texture and the way they are clenched around the bars. The background is black, making the hands and bars stand out.

# The New Jim Crow

Mass Incarceration in the Age of Colorblindness

MICHELLE ALEXANDER

# Changes in Criminal Justice System

Created War on Drugs

Created mandatory sentencing for drug possession

## Results since 1980:

Number of annual drug arrests tripled

Number of annual drug arrests resulting in prison sentence quadrupled

1100% increase in population imprisoned for drug offenses

Prison population 1980: **300,000**

Prison population 2010: **2,300,000**

Today, more than 7,000,000 Americans behind bars, on probation, or on parole

**MORE THAN 31 MILLION DRUG ARRESTS SINCE WAR ON DRUGS DECLARED**

# Racial Implications of Changes

Fact 1: Whites are majority of drug users

Fact 2: Similar rates of use and selling by racial group,  
except white youth, who use at higher rate

Yet: Black men sent to prison on drug charges at rate 13x white men

Yet: 75% of all people imprisoned for drug offenses are black or Latino

## Changes in Incarceration Rates since 1983:

For whites, 8 times greater

For Latinos, 22 times greater

For blacks, 26 times greater

Black and Hispanic Men under 35:

**ABOUT 1/3 WILL BE BEHIND BARS,  
ON PROBATION, OR ON PAROLE AT SOME POINT IN LIFE**

# Why it Matters

## **If convicted of felony drug offense or imprisoned**

- \* No student loans
- \* Cannot live in public housing
- \* Cannot serve on juries
- \* Cannot vote for at least 12 years
- \* Severely limited employment opportunities
- \* Much more likely to be sent back to prison
- \* Closed circuit of perpetual marginality



# Alienate



Illegal ALIEN  
not "illegal immigrant"

*e-Claire*

# Immigration Crisis



Immigration at the Crossroads 2012

# Enforcement

## No Documentation!

No driver's licenses and more uninsured drivers

Indentured servants

ER only medical choice

Education suffers

Gangs offer main alternative



## Raid and Audit!

Pushes undocumented into cash economy

Increases uninsured, underpaid population

Penalizes businesses who try to comply

Deprives government of tax revenues



## Enforce and Report!

Splits up families

Disrupts communities

Kids live in fear

Detention facilities are overflowing

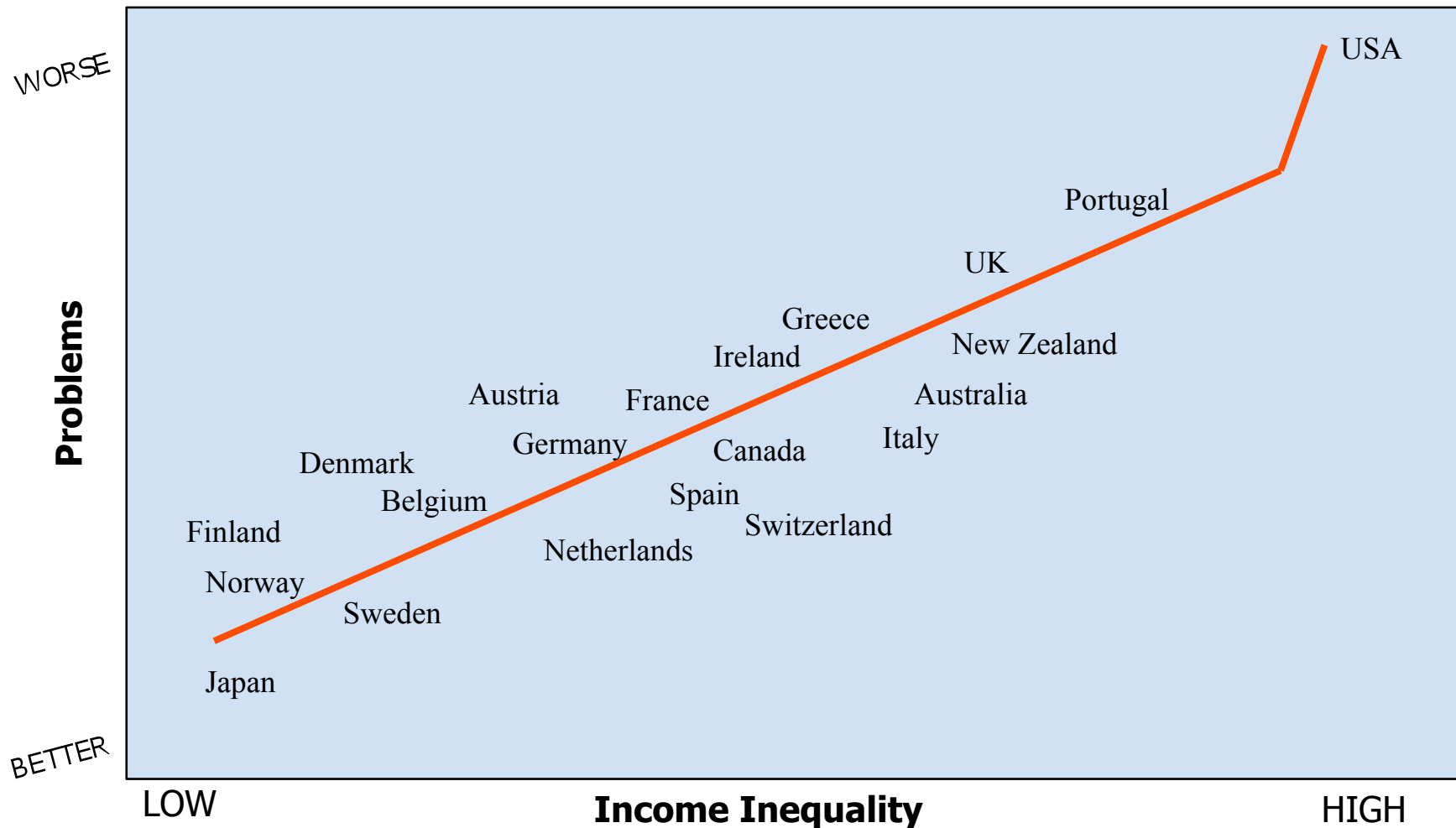
Over-burdened social agencies



# How Race Works Today

- De-colorate
- Segregate
- Incarcerate
- Alienate

# Health & Social Problems Closely Related to Inequality among Rich Countries



Problems = Trust level, mental illness, substance addiction, life expectancy, infant mortality, obesity, children's educational performance, teen births, homicides

# Martin Luther King

- “We will be greatly misled if we feel that the [race] problem will work itself out. Structures of evil do not crumble by passive waiting. . . . Evil must be attacked by a counteracting persistence, by the day-to-day assault of the battering rams of justice.”
- Where Do We Go From Here, 1967, p. 128.



# Strategy for Healing the Brokenness

- 1. Determine that one role as religious organizations and people is to work for justice and reconciliation
- 2. Work across level and type



# Approaches to Change

## Focus of Change

Level of Change	INTERNAL	EXTERNAL
INDIVIDUAL	*Heart Conversion *Personal Study	*Educational Training *Job Assistance
SOCIAL STRUCTURAL	*Diversify Organization *Theology of Justice *Dinners of 6	*Immigration Reform *Advocate for Changed CJ Laws

# Strategy for Healing the Brokenness

- 1. Determine that one role as religious organizations and people is to work for justice and reconciliation
- 2. Develop focus by considering level and type
- 3. **TRINITY** is our key: Unity in Diversity. Go not alone. Be part of a religious movement.

# Unstoppable



Jim Rider / South Bend Tribune

